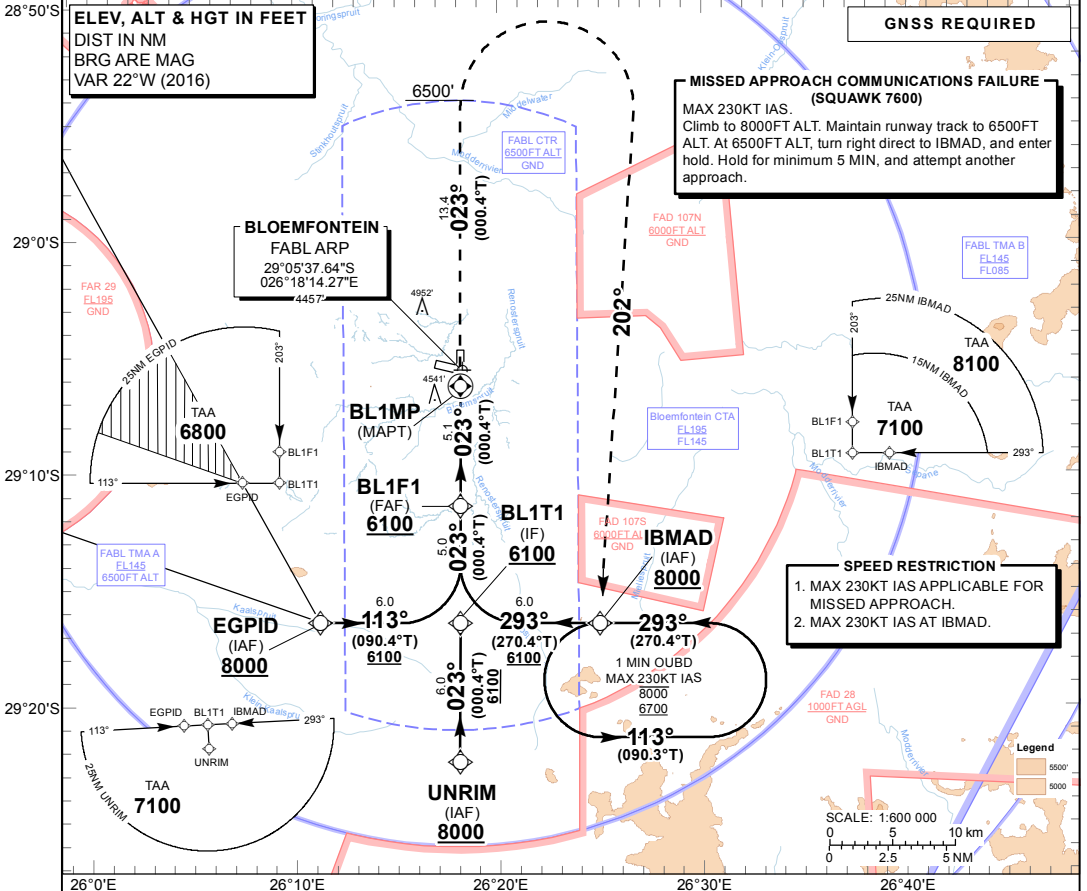


**INSTRUMENT APPROACH CHART - ICAO** **AERODROME ELEV 4457'**  
**HEIGHTS RELATED TO THR RWY 02 - ELEV 4413'**

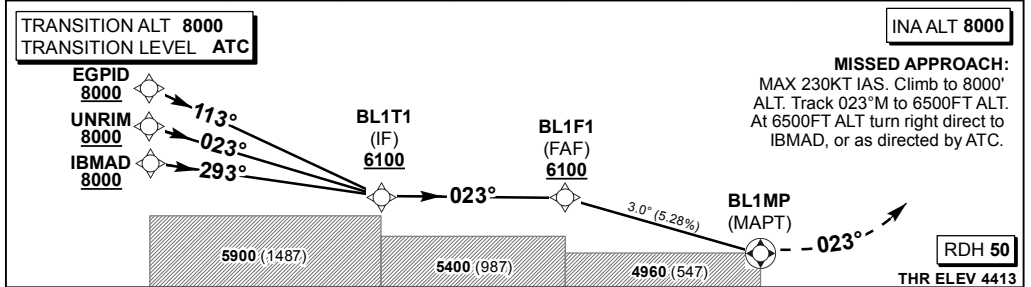
APP: 124.3  
 APP E: 124.3  
 APP W: 119.4  
 TWR: 120.8



**BLOEMFONTEIN (BRAM FISCHER INTL) RNAV (GNSS) RWY 02**  
 CAT A - D



<b>Distance to THR 02</b>	5	4	3	2	1	
<b>ADVISORY ALT(HGT)</b>	6060 (1647)	5740 (1327)	5420 (1007)	5100 (687)	4790 (377)	



MIN TEMP: -10°C MAX TEMP: +62°C	A	B	C	D	<b>GS</b>	KT	80	100	120	140	160	180	
					<b>FAF to THR 02</b>	M:S	3:51	3:05	2:34	2:22	2:12	1:42	
Straight-in Approach	VNAV	4750 (337)				Rate of descent	FPM	425	531	637	690	743	955
	LNAV	4960 (547)				<b>NOTE:</b>							
	RVR	1500m		2000m		1. Hold may be conducted partially outside controlled airspace.							
	ALS OUT	1500m		2000m		2. MAPT at THR.							
Circling	5000 (543)		5257 (800)		6099 (1642)		3. MAX speed restriction of 230KTS IAS in the missed approach.						
							4. MAX holding speed of 230KTS IAS.						
5. BaroVNAV operations not authorised below -10°C and MAX VPA 3.5°.													
6. No turns prior MAPT.													

**CHANGE: IBMAD OUBD HDG**

EFF: 30 MAR 17